

THE LIVESTOCK COMFORT SPECIALIST

Agri-Comfort



**Your premier resource for
superior livestock comfort innovations.**



THE LIVESTOCK COMFORT SPECIALIST



We are your livestock comfort specialists.

By partnering with leading manufacturers, Agri-Comfort delivers the most innovative products and solutions from around the world. We bring knowledge and experience to ensure all livestock have the best products available.

Our focus has always been on comfort and durability, with offerings that are farm-tested and livestock approved.



Stress Reducing Systems Brushes, Toys and More

Key Advantages

- Alleviates stress
- Offers fly and parasite relief
- Natural grooming alternative
- Reduces unnecessary barn damage
- Potential to increase production & profitability

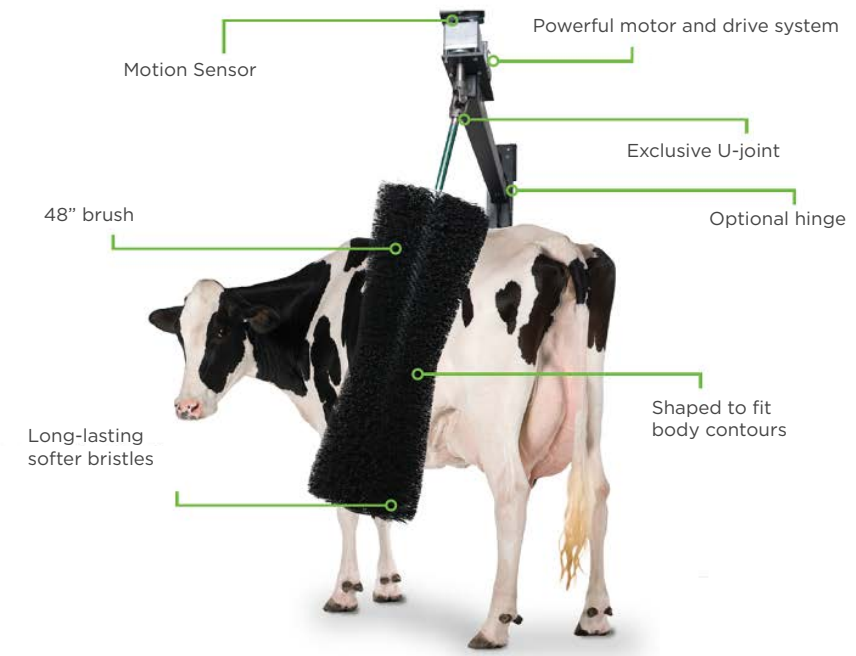
This heavy-duty unit features a 24" cow brush, attached to a sturdy yet flexible cable. The design offers just the right amount of tension to let your cows brush their heads, sides or backs. Ideal for barns or lots with no electrical access, the Stationary Brush is maintenance free with no additional costs after installation. There is no limit to the number of cows that can use one brush.

Stationary Brush

This Stationary Brush is a popular way to keep your cows clean and happy.



Comfort Brush



Comfort Brush

The heavy-duty, 48" rotating Comfort Brush is perfect for keeping your cows clean, relaxed and comfortable.



Key Advantages

- Relief from stress, flies and parasites
- Grooming assistance; keeps cows clean and relaxed
- Protects barns from damage
- Only cow brush manufactured in the USA
- 2-year warranty, 30-day money-back guarantee

Calf Brush

Designed and sized specifically for calves to increase their comfort and decrease stress.



Calf Enrichment Toy

This easy-to-install, free-swinging ball helps occupy calves while easing them into a group housing environment.



Soft Bed 4GS and 8GS

Our highly advanced Huber Technik cubicle flooring provides dairy cows with an ideal comfort surface to relax joints, enhance health and improve overall productivity. Combining a specially designed, 100% virgin rubber top cover and composite Agglorex latex foam substructure, this flooring offers the latest in soft bed technology, with tensile strength that has been tested and proven.

Here's how it works:

- **Decking** - The full rubber decking features a high-strength fabric, 4 mm or 8 mm thick, depending on the model, which is bolted to the concrete on both sides of the foam base. A slope in the rear area facilitates liquid drainage for surface dryness and easy cleanup.
- **Foam base/deflection** - The foam base consists of either 30 mm or 40 mm thick composite foam sheets, creating perfect deflection. The compression resistance is designed for high punctual loads by dairy cows, keeping the shape of the base intact for many years.

The latex underlay is significantly stronger, more form-stable and more durable than outdated polyurethane rebond foam. This results in virtually maintenance-free performance for years to come.



Soft Bed 4GS/8GS

Proven tensile strength, and more



With the use of thinner top cover materials, tensile strength is more important than ever. These Huber Technik products have been subjected to the rigorous Fokus Test by The German Agricultural Society (DLG), and earned the top ++ evaluations. In addition to tensile strength, we achieved high scores in all categories, including deformability/elasticity, permanent tread load and ultimate elongation.

Soft Bed 4/30 with top cover 4GS

Elasticity/compression:

++ acc. to DLG report 6014F (>21mm)

Width:

Top Cover 180/200 cm, Latex Underlay
160/180 cm, thickness 30 mm

Length:

10-100 m

Fastening:

Anchor bolts every 25 cm on both sides of the cover with 5 cm distance to the edge of the top cover

Soft Bed 8/40 with top cover 8GS

Elasticity/compression:

++ acc. to DLG report 5807F (26.8 mm)

Width:

Top Cover 180/200 cm, Latex Underlay
160/180 cm, thickness 40 mm

Length:

10-70 m

Fastening:

Anchor bolts every 25 cm on both sides of the cover with 5 cm distance to the edge of the top cover

DOBRŮ

Dobro Mats

For alley ways, holding areas, parlors and other high-traffic areas, choose Dobro rubber. These interlocking floor options feature European quality and an optimal composition of virgin and recycled rubber for long-lasting comfort.

DB 2.1

THICKNESS: 1"

DIMENSIONS: 41 x 61 3/8"

WEIGHT: 81 lbs

WARRANTY: 5 years

APPLICATION: Driving corridors (under scrapers)
Milking parlors | Waiting areas



DB 2.4

THICKNESS: 3/4"

DIMENSIONS: 46 1/8 x 76 3/4"

WEIGHT: 103 lbs

WARRANTY: 5 years

APPLICATION: Driving corridors (under scrapers)
Milking parlors | Waiting areas



DB 2.5

THICKNESS: 1"

DIMENSIONS: 46 1/8 x 76 3/4"

WEIGHT: 101 lbs

WARRANTY: 5 years

APPLICATION: Preferred application is DB-S
Driving corridors (under scrapers)
Milking parlors | Waiting areas



DB 2.6 / 2.7

THICKNESS: 3/4" / 1"

DIMENSIONS:
46 1/8 x 76 3/4" / 41 x 61 3/8"

WEIGHT: 103 / 81 lbs

WARRANTY: 5 years

APPLICATION: Driving corridors (under scrapers)
Milking parlors | Waiting areas



Agri-Sand Saver

This innovative grid fits easily into freestalls to dramatically improve the performance and efficiency of your sand bedding efforts. Using the grid can reduce your sand usage by up to 50%!



- Original and unique grid design
- Supports hooves, keeps bed level and minimizes sand waste
- Robust, comfortable and improves lying position
- Promotes accessibility and aids cubicle alignment
- Reduces daily stall maintenance



Milk Bar Vitality System

Innovative weaning, made simple.

Milk Bar Vitality Bottle System

This innovative system is easy to install. It cuts time spent raising calves and reduces the costs associated with poor health. The unique Chute System works to self-align the bottle, guaranteeing correct bottle positioning every time.



Chute ensures vertical Milk Bar Teat for correct suckling speed.



Proven Increase in Lactose Absorption!

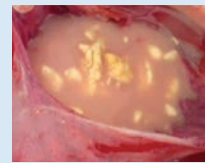
Lactose absorption is the single most important measure of success when feeding calves. If they drink too fast, lactose passes through the digestive system and is wasted, instead of contributing to weight gain. This is the key benefit of the Milk Bar Vitality System, as the rate of flow is controlled, slowing feeding time to maximize milk curdling and lactose absorption.

Calves fed by Milk Bar teats



- Healthy, thick, even curdling
- Only **3mg/gm** of lactose remained
- Reduced lactose in intestines limits food source required for pathogens to multiply

Calves fed by faster feeding teats



- Insufficient curdling
- Significantly higher lactose in abomasum: **12mg/gm**
- Much higher lactose concentrations in intestines and feces; this feeds pathogens, allowing them to multiply rapidly – a major cause of scours

Self-aligning Chute

The assembled bottle is inserted into the custom-designed chute, where it automatically positions itself correctly. Mistakes are eliminated by the color-coded tag attached to the pen, hutch or chute. Bottles are simply matched to the tag color. The calf does the rest, pulling the teat forward; then as she drinks, the chute locks the bottle into place.



Color-coded Vitality Bottle Teat Clips

An easy-to-track color-coding system is used, so calves born in the same week are all assigned one color. The same color is then used on the Teat Clip, which fits into the Vitality Bottle Cap. This makes it easy to keep calves suckling from a matching, properly aged teat until weaning is complete.

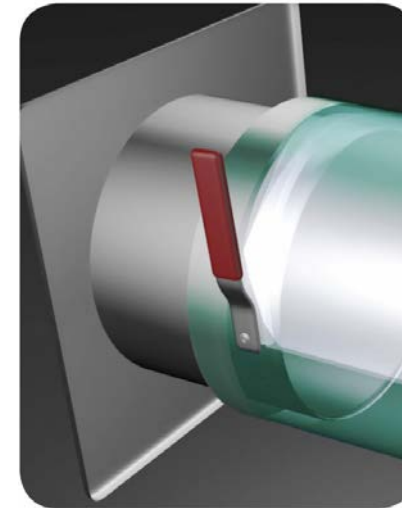
Easy cleanup

There is no need to dismantle the Vitality Bottle Cap for cleaning. There is also no need to remove the Milk Bar Teat from the Teat Clip for cleaning. The system has been designed for maximum ease and time-efficiency, meaning that the complete unit may be washed in warm water with an alkali detergent. When calves are weaned, simply discard the teat (since it will be worn and will no longer feed young calves at the proper speed).



Flap Duct®

Pre-Engineered Ventilation Tube System keeps air flowing in any structure.



Easy, single-lever control

Ideal for all seasons

Customize airflow for your herd

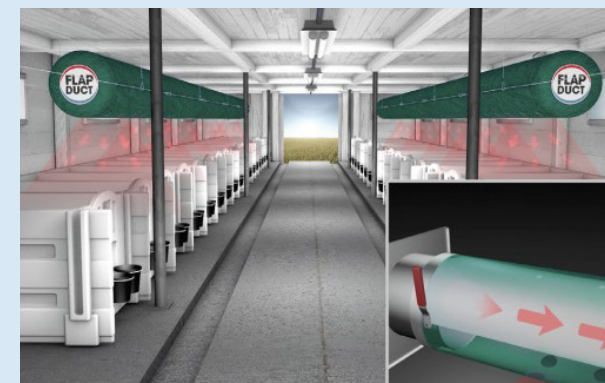
Adjust for warm or cold weather

The FLAP DUCT® Ventilation System gives producers outstanding control over ventilation requirements for a customized solution that shelters your biggest investment—your calves.

Agri-Plastics understands that individual setups often need individualized solutions. With FLAP DUCT®, the patented internal membrane can be adjusted up or down to adjust the airflow based on seasonal conditions with the simple flick of a lever. This system is particularly useful during the spring and the fall, when the days are warm and the nights cool. With the membrane in the up position, high speed air showers calves during warm weather. Simply move the lever down to adjust the membrane to the bottom of the tube to deliver slow, non-drafty fresh air during cold weather. Once installed, the membranes can be moved up or down to precisely control airflow based on your herd's needs in every season.

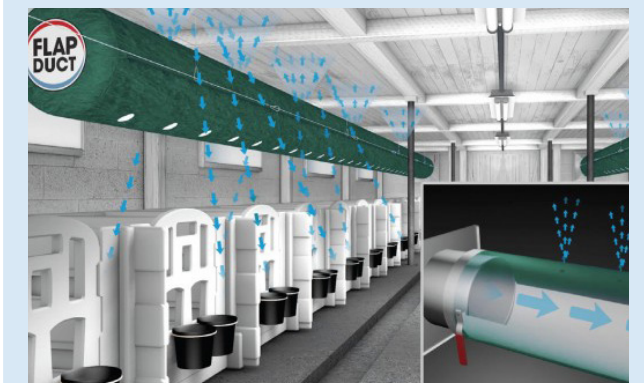
Warm Weather

- Variable speed fan set to HIGH
- Internal membrane rests at TOP of duct
- EASY lever control: It's a breeze to adjust to changing conditions



Cold Weather

- Variable speed fan set to LOW
- Air flows through SMALL holes
- Gently delivers slow, non-drafty fresh air to calves





THE LIVESTOCK COMFORT SPECIALIST

Agri-Comfort


A Division of

AGRI-PLASTICS 
Group of Companies

US Office

701 East Elm St.

Sidney, NE 69162

Phone: 308-254-1137

Fax: 308-254-4527

Toll-free in North America:

1 (888) 231-3575

info@agri-comfort.com

www.agri-comfort.com