

THE LIVESTOCK COMFORT SPECIALIST

# **Agri-Comfort**

**Your premier resource for  
superior livestock comfort innovations**




# Proven comfort solutions for your farm. Peace of mind for you.

**Huber Technik**  
German Durable Cow Comfort




Mattress and Alley rubber options provide maximum comfort with proven, lasting durability

Made in Germany 

**Agri-Sand Saver**



Rubber grid mats that support hooves and improve lying position while minimizing sand waste and maximizing sand efficiency

Made in USA 

**GEYER & HOSAJA**  
rubber innovations



Rubber mats with a nonslip tread design and strong interlock allow for a "seamless" surface and easier installation

Made in Poland 


THE LIVESTOCK COMFORT SPECIALIST

**Agri-Comfort**

**FutureCowl**




Welfare Enrichment: Proven innovation that works to provide comfort and better livestock performance

Made in USA 

**FLAP DUCT**



A ventilation system that allows barns to regulate air speed depending on the season and needs of your livestock

Made in USA 

**MILK BAR**



The Vitality System: The solution for optimal calf health that safeguards calves from the harmful effects of fast feeding

Made in New Zealand 

**Agri-Comfort brings knowledge and expertise to manufacturers, distributors and dairy farmers.**

**Our focus has always been on comfort and durability, and bringing innovative products to the market that are farm-tested.**



## How and Why Agri-Comfort Started

Agri-Comfort was founded by Darren VanBuuren of Agri-Plastics and Noel Kelly of Creva Agri-International who are dairy farmers and established leaders in cow and calf comfort solutions. We are passionate about what we do and work hard to ensure that fellow dairy farmers worldwide are aware of and have access to the best on farm solutions through the use of efficient and effective logistics and sales channels. We chose to partner with the best factories so that farmers can trust where the products are sourced, the factory warranties and the advice offered by their specialists.



**Darren VanBuuren**  
Owner and CEO

**Noel Kelly**  
International Sales Director

## Our sales team and specialists are here to help you!



**Steve Bartlam**  
North American  
Product Manager



**Skip Wiswell**  
Northeast USA  
Sales Representative



**Paul Prekup**  
Canadian  
Sales Representative



**Nele Schermeier**  
German Veterinary Consultant  
and Cow Comfort Specialist



**Robert Fiolek**  
Polish and Eastern Europe  
Representative and Consultant



**Taissia Mortensen**  
Russian Sales Representative  
and Consultant



**Diego Acero**  
French and Spanish  
Sales Representative



**Ronan Gleeson**  
UK/Ireland/International  
Sales Representative



# Rubber Flooring

- Established in 1925
- Made in Germany
- Only new tire rubber compound
- PAH and ISO 9000 certified



## SOFT BED 4GS AND 8GS



Our highly advanced Huber Technik cubicle flooring provides dairy cows with an ideal comfort surface to relax joints, enhance health and

improve overall productivity. Combining a specially designed, 100% virgin rubber top cover and composite Agglorex latex foam substructure, this flooring offers the latest in soft bed technology, with tensile strength that has been tested and proven.

### Soft Bed 4/40 with top cover 4GS

#### Elasticity/compression:

++ acc. to DLG report 6014F (>.83" • >21mm)

#### Width:

Top Cover: 70.9/78.7" • 180/200cm  
Latex Underlay: 63/70.9" • 160/180cm  
Thickness: 1.181" • 30mm

**Length:** 32.8-328' • 10-100m

**Fastening:** Anchor bolts every 9.84" / 25cm on both sides of the cover with 1.99" / 5cm distance to the edge of the top cover

### Soft Bed 8/30 with top cover 8GS

#### Elasticity/compression:

++ acc. to DLG report 5807F (1.06" • 26.8 mm)

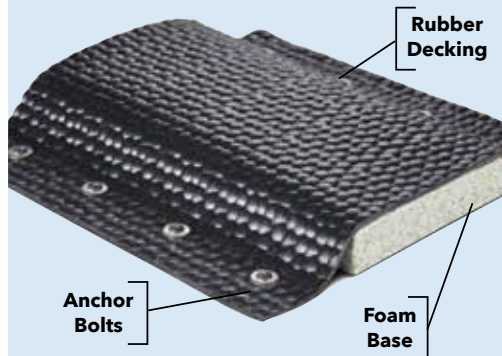
#### Width:

Top Cover: 70.87"/78.7" • 180/200cm  
Latex Underlay: 63/70.87" • 160/180cm  
Thickness: 1.6" • 40mm

**Length:** 32.8-229.7' • 10-70m

**Fastening:** Anchor bolts every 9.84" / 25cm on both sides of the cover with 1.99" / 5cm distance to the edge of the top cover

## Here's how it works:



**Decking** – The full rubber decking features a high-strength fabric, .16" / 4mm or .31" / 8mm thick, depending on the model, which is bolted to the concrete on both sides of the foam base. A slope in the rear area facilitates liquid drainage for surface dryness and easy cleanup.

**Foam base/deflection** – The foam base consists of either 1.181" / 30mm or 1.6" / 40mm thick composite foam sheets, creating perfect deflection. The compression resistance is designed for high punctual loads by dairy cows, keeping the shape of the base intact for many years.



## AGRI-BRISKET BOARD

This Brisket Board is a durable solution for any new or existing stall system. Its design is ideal for protecting dew claws and allowing your cattle to extend their legs in a natural manner. Due to the natural curve in the brisket, it is strong enough to support your cattle's weight.

- Heavy-duty .25" / .64cm thick poly that won't crack, chip, or splinter
- 96" / 243.8cm lengths with pre-drilled holes along the sides for easy installation





### Proven tensile strength and more

Huber Technik products have been subjected to the rigorous Fokus Test by The German Agricultural Society (DLG), and earned the top ++ evaluations.



### Seamless Installation

We can deliver our products in one piece up to a length of 328' / 100m. For farmers, this means the floors are easy to install: Put down, roll out and screw tight. There are no seams, which means less wear and soiling than individual mats.



### 10-Year Warranty

Huber processes 100% new rubber, not scrap granules. We only process high-quality raw material, therefore, we are able to give a 10-year warranty on all our products.



### 100% Virgin Tire Compound

Our mats are exclusively made of new unvulcanised tire compound. They contain high-quality raw material that provide among other things aging resistance and ozone protection.

## N-SERIES ROLLS

Different degrees of softness are achieved by our special studs (pimpling effect) on the underside. N15 and N18 alley floors allow the dairy cow to walk and stand in a soft, comfortable and joint-friendly manner. The farmer benefits by contented cows, easy-to-clean barns and excellent hoof health. N20 and N33 Comfort rolls are floors that are placed directly on the concrete surface.



### N-15 Rolls

**Ideal for:** Alleyways, Holding areas, Parlors

**Thickness:** .59" / 15mm

**Width:** 19.7-118.1" / 500mm-3000mm in steps of 3.93" / 100mm

**Length:** 32.8-229.7' and 164' / 10-70m and 50m

**Warranty:** 10 years

**Features:** Smallest studded underside provides cushion and traction. Deflection/Penetration depth of .17" / 4.3mm



### N-18 Rolls

**Ideal for:** Alleyways, Holding areas, Parlors

**Thickness:** .7" / 18mm

**Width:** 19.7-118.1" / 500mm-3000mm in steps of 3.93" / 100mm

**Length:** 32.8-229.7' and 164' / 10-70m and 50m

**Warranty:** 10 years

**Features:** Small studded underside provides cushion and traction. Deflection/Penetration depth of .03" / 10.7mm



### N-20 Rolls

**Ideal for:** Free Stalls and Tie Stalls

**Thickness:** .79" / 20mm

**Width:** 47.25-78.74" / 1200mm-2000mm

**Length:** 32.8-164' / 10-50m

**Warranty:** 10 years

**Features:** Medium studded underside provides cushion and traction. Deflection/Penetration depth of .03" / 10.7mm



### N-33 Rolls

**Ideal for:** Free Stalls and Tie Stalls

**Thickness:** 1.3" / 33mm

**Width:** 74.8' / 1900mm

**Length:** 32.8-131.2' / 10-40m

**Warranty:** 15 years

**Features:** Largest studded underside provides cushion and traction. Deflection/Penetration depth of .67" / 17mm



# GEYER & HOSAJA

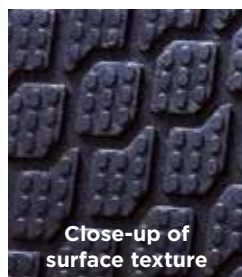
rubber innovations

## Rubber Mats

- Established in 1987
- Made in Poland
- Exclusive design of mats and high-grip tread pattern



### INTERLOCKING RUBBER MATS



- Imitates the natural substrate
- Increased durability and resistance to wear
- Anti-slip surface
- Quick and easy assembly
- Can be cut to custom sizes
- Cross tread underside provides deflection and traction

#### DB 2.1

**Ideal for:** Alleyways, Holding areas, Parlors

**Thickness:** 1" / 2.54cm

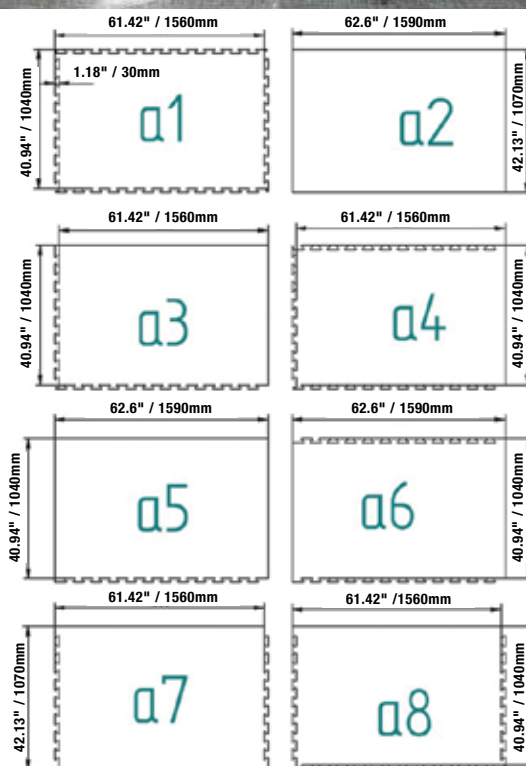
**Dimensions:** 3.41' x 5.12' / 1.04m x 1.56m

**Weight:** 81 lbs. / 36.7kg

**Warranty:** 5 years

**Features:** High-grip tread pattern for maximum traction. Strong interlock allows for "seamless" surface and installation

With 8 different size and edge configurations, there is greater flexibility to cover a variety of spaces. Rubber can be also cut to custom sizes.



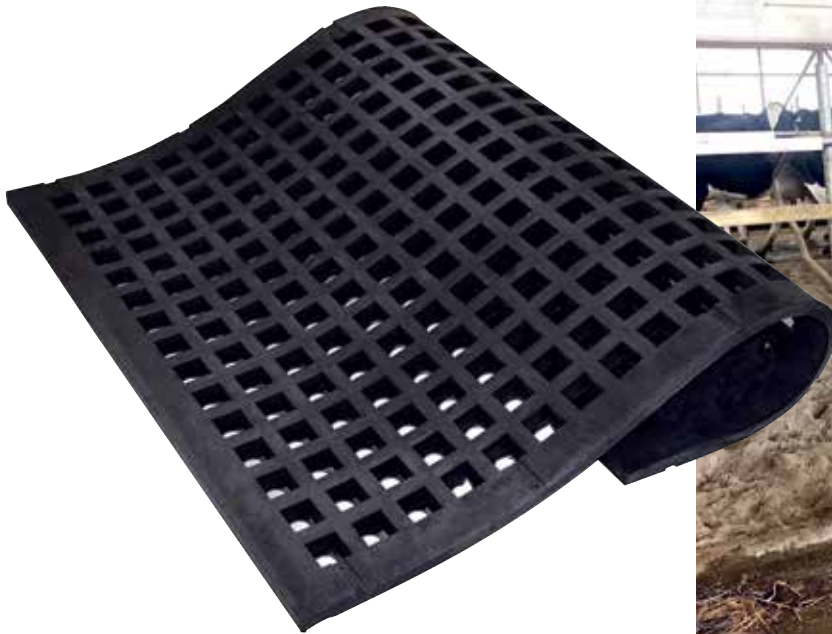


# Rubber Mats

- Established in 2015
- Made in USA
- Exclusive grid design minimizes sand waste and reduces digging



**Agri-Sand Saver**



## AGRI-SAND SAVER RUBBER MATS

- Original and unique grid design
- Robust, comfortable and improves lying position
- Promotes accessibility and aids cubicle alignment
- Reduces daily stall maintenance
- Supports hooves, keeps bed level and minimizes sand waste
- Thickness: 1.38" / 35mm
- Dimensions: 4' x 5' / 1.219m x 1.52m

### Reduce sand usage by up to 50%

This innovative grid fits easily into freestalls to dramatically improve the performance and efficiency of your sand bedding efforts. Using the grid can reduce your sand usage by up to 50%!

With a solid base, there is less stall maintenance. Cows have less of a tendency to dig in the sand, so the bed does not "belly out." Traditionally, a lot of labor is spent evening out the sand bed. With the Agri-Sand Saver Mat, the bed stays more level.





## Feeding System

- Established in 1987
- Made in New Zealand
- Maximizes curdling, prevents cross-suckling and aids rumen development



### Proven Increase in Lactose Absorption!

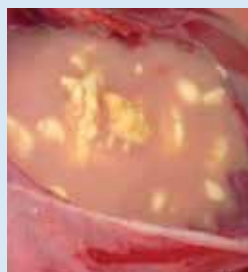
Lactose absorption is the single most important measure of success when feeding calves. If they drink too fast, lactose passes through the digestive system and is wasted, instead of contributing to weight gain. This is the key benefit of the Milk Bar Vitality System, as the rate of flow is controlled, slowing feeding time to maximize milk curdling and lactose absorption.

#### Calves fed by Milk Bar teats



- Healthy, thick, even curdling
- Only **3mg/gm** of lactose remained
- Reduced lactose in intestines limits food source required for pathogens to multiply

#### Calves fed by faster feeding teats



- Insufficient curdling
- Significantly higher lactose in abomasum: **12mg/gm**
- Much higher lactose concentrations in intestines and feces; this feeds pathogens, allowing them to multiply rapidly – a major cause of scours



### Easy Cleanup

There is no need to dismantle the Vitality Bottle Cap for cleaning. There is also no need to remove the Milk Bar Teat from the Teat Clip for cleaning. The system has been designed for maximum ease and efficiency, meaning that the complete unit may be washed in warm water with an alkali detergent. When calves are weaned, simply discard the teat (since it will be worn and will no longer feed young calves at the proper speed).





## Milk Bar Vitality Bottle System:

Each system 5-pack comes with the following:

- 5 Milk Bar Vitality 2.64 Qt. / 3L Bottles
- 5 Milk Bar Vitality Bottle Caps
- 5 Milk Bar Vitality Bottle Chutes
- 5 Milk Bar Vitality Aligning Sockets
- 1 Milk Bar Colostrum Training Teat
- 10 Milk Bar Teats
- 10 Milk Bar Vitality Teat Clips (one of each color)
- 10 Milk Bar Vitality Tags (one of each color)

This innovative system is easy to install. It cuts time spent raising calves and reduces the costs associated with poor health. The unique Chute System works to self-align the bottle, guaranteeing correct bottle positioning every time.

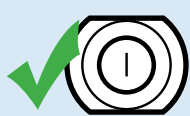
### Self-Aligning Chute

The assembled bottle is inserted into the custom-designed chute, where it automatically positions itself correctly. Mistakes are eliminated by the color-coded tag attached to the pen, hutch or chute. Bottles are simply matched to the tag color. The calf does the rest, pulling the teat forward; then as she drinks, the chute locks the bottle into place.



Chute ensures vertical Milk Bar Teat for correct suckling speed.

Correct Alignment

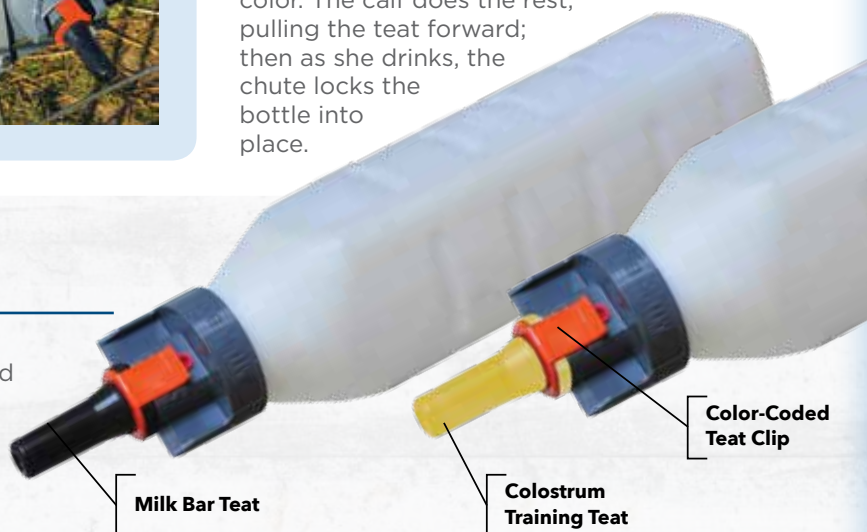


Incorrect Alignment



### Color-coded Vitality Bottle Teat Clips and Identification Disc

An easy-to-track color-coding system is used, so calves born in the same week are all assigned one color. The same color is then used on the Teat Clip, which fits into the Vitality Bottle Cap. This makes it easy to keep calves suckling from a matching, properly aged teat until weaning is complete.



Week 1: Orange



Week 2: Blue



Week 3: Red



Week 4: Violet



Week 5: Yellow



Week 6: Black



Week 7: Grey



Week 8: White



Week 9: Light Blue



Week 10: Green



## Brushes and Calf Ball

- Established in 2008 • Made in USA
- Promotes social interaction
- Improves overall health

### Calf Ball and Stationary Brush

#### 15" / 38.1cm Calf Ball

*This easy-to-install, free-swinging ball helps occupy calves while easing them into a group housing environment.*



#### Ease Calves into Adulthood

The Calf Ball also helps to prevent conventional weaning distress by creating a safer alternative to typical coping behavior. All of these benefits make the FutureCow Calf Ball a popular, effective tool that could result in healthier, more productive cows over the long term.

#### Key Advantages

- Reduce suckling among themselves
- Minimize the rubbing on stalls, barns & equipment
- Lessen vocalizations
- Promote healthy social interaction
- Enrich their formative months

#### 24" / 60.96cm Stationary Brush

*This Stationary Brush is a popular way to keep your cows clean and happy.*



#### Easy installation - No electricity needed

This heavy-duty unit features a cow brush, attached to a sturdy yet flexible cable. The design offers just the right amount of tension to let your cows brush their heads, sides or backs. Ideal for barns or lots with no electrical access, the Stationary Brush is maintenance-free with no additional costs after installation. There is no limit to the number of cows that can use one brush.

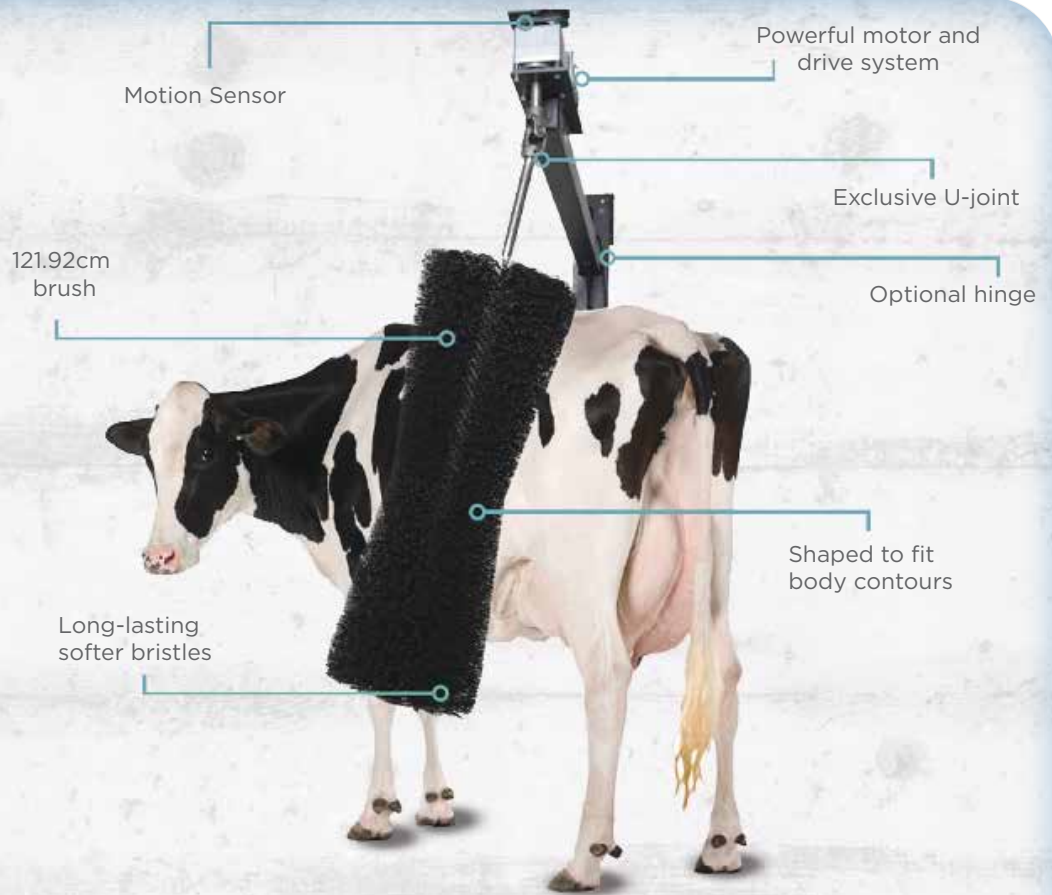


# Rotating Comfort Brushes

**24" / 60.96cm**  
**48" / 121.92cm**

## Key Advantages

- Relief from stress, flies and parasites
- Grooming assistance; keeps cows clean and relaxed
- Protects barns from damage
- Only cow brush manufactured in the USA
- 2-year warranty, 30-day money-back guarantee



## 24" / 60.96cm Calf Brush

*Designed and sized specifically for calves to increase their comfort and decrease stress.*



### Happier, healthier, more active calves

The Calf Brush is designed specifically for calves as soon as they are weaned and placed in group housing. The brush is the perfect size for calves and will help keep them clean, improve their comfort and decrease stress levels. This results in happier, healthier and more active animals.

## 48" / 121.92cm Comfort Brush

*The heavy-duty, rotating Comfort Brush is perfect for keeping your cows clean, relaxed and comfortable.*



### Motion-activated, hourglass-shaped brush

Each ComfortBrush is motion-activated so the unit only runs when your cows are ready to interact. The hourglass-shaped brush is specifically designed for cows and the softer bristles used in our brushes provide maximum comfort and durability.



## Ventilation System

- Serving the farming community since 1997
- Made in USA
- Improves air quality and barn temperature for improved milk production



### Flap Duct®:

**Pre-Engineered Ventilation Tube System keeps air flowing in any structure**

#### Key Advantages

---

- Easy, single-lever control
- Ideal for all seasons
- Customize airflow for your herd
- Adjust for warm or cold weather

The FLAP DUCT® Ventilation System gives producers outstanding control over ventilation requirements for a customized solution that shelters your biggest investment – your calves.

Agri-Comfort understands that individual setups often need individualized solutions. With FLAP DUCT®, the patented internal membrane can be adjusted up or down to adjust the airflow based on seasonal conditions with the simple flick of a lever.



---

**This system is particularly useful during the spring and the fall, when the days are warm and the nights cool**

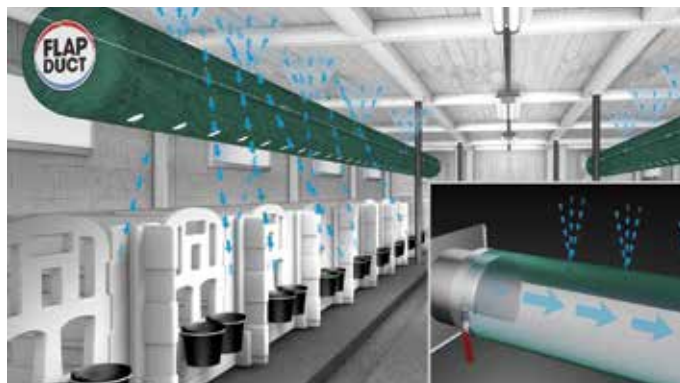
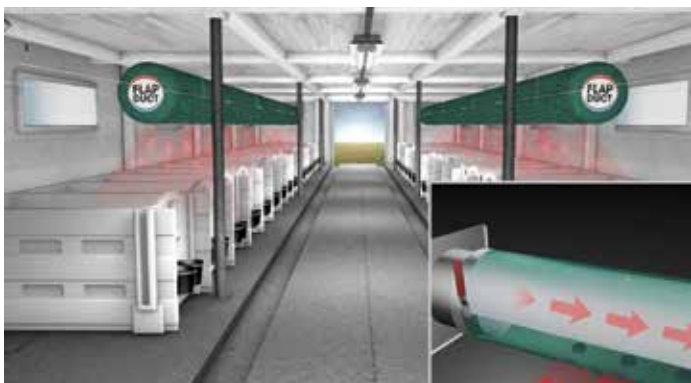
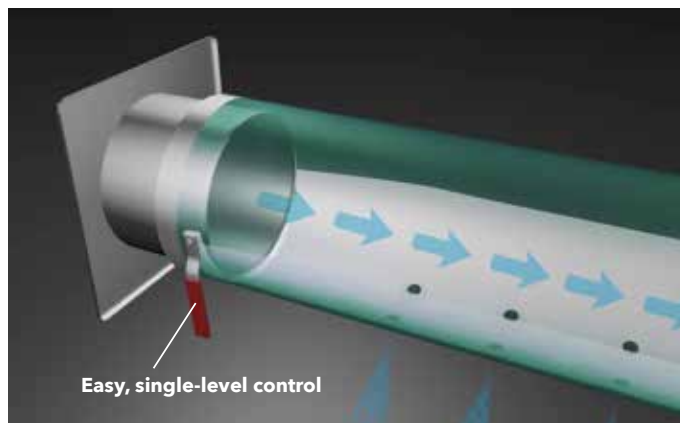
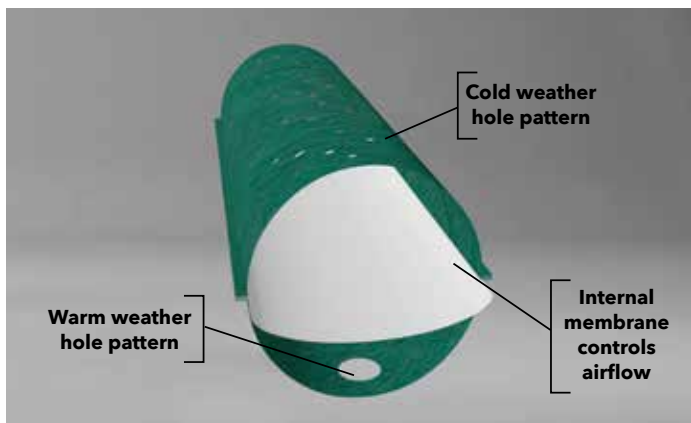
---

With the membrane in the up position, high speed air showers calves during warm weather. Simply move the lever down to adjust the membrane to the bottom of the tube to deliver slow, non-drafty fresh air during cold weather.

Once installed, the membranes can be moved up or down to precisely control airflow based on your herd's needs in every season.



## How Flap Duct Works:



### Warm Weather

- Variable speed fan set to HIGH
- Internal membrane rests at TOP of duct
- EASY lever control: It's a breeze to adjust to changing conditions

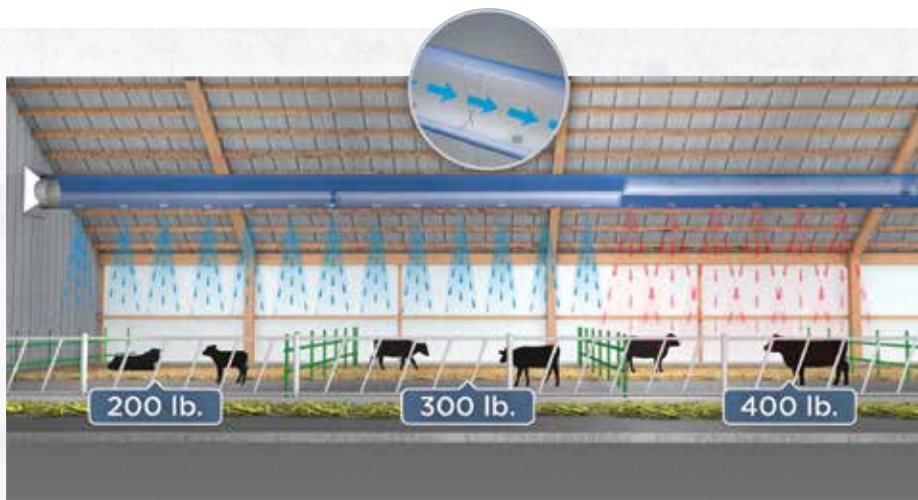
### Cold Weather

- Variable speed fan set to LOW
- Air flows through SMALL holes
- Gently delivers slow, non-drafty fresh air to calves

### Segmented membranes allows for customized venting in 1 duct

Many post-weaned calf barns have pens containing groups of differently sized animals along their length. As the size of the calves in each pen increases, the ventilation requirements for them increase as well. The versatility afforded by FLAP DUCT's segmented membranes allows those varying ventilation requirements to be met.

The calves in the first pen are the youngest and smallest calves in the barn. As such, they require the least amount of fresh air and are the most susceptible to a draft in cold weather. As fall approaches and temperatures get to 50 degrees Fahrenheit, use the lever control mechanism to adjust the first segment of the internal membrane down, reducing the volume and air speed delivered to that first



pen. The other pens have larger, heartier animals that can handle more air flow, but as fall temperatures drop, air speed and volume should be reduced accordingly. Use the vertical rods to adjust the internal membranes to the down position so that each pen is ventilated appropriately.

# Frequently Asked Questions



## RUBBER FLOORING Q AND A:

### 1. What is rubber?

Today, the word "rubber" denotes many synthetic materials with elastic properties in addition to natural rubber. Rubber has the ability to cross-link under heat and high pressure. This process provides rubber with the desired and final form. This rubber-specific cross-linking ability is called vulcanization. This process happens only once and it cannot be reversed.

### Is it new rubber or a rubber regenerate?

Vulcanized rubber cannot be melted and newly pressed. It can only be broken up with a high amount of energy. Regenerates come mainly from broken up old tires. They have little binding strength left (ability to cross-link). In order to reshape them, bonding agents must be used. Regenerates are primarily suitable for relatively hard, large-volume components.

### Is it natural rubber or a tire mixture?

Huber Technik uses only new tire rubber, with a minimum of 90 % of it having not been vulcanized (new rubber). Tire mixtures contain valuable additives, which ensure age-resistance. Lower priced natural rubber mixtures do not contain those stabilizers. Therefore, the influence of light and air (ozone) easily makes them brittle. A high specific weight (>1.2) is an indicator for a high amount of fillers (chalk) in the rubber compound. Fillers make the compound heavier and cheaper. A high amount of filler is not an advantage for a product's elasticity and durability.

### What does wear-and-tear resistance mean?

To determine wear-and-tear ability of rubber products, tear resistance, stretching ability at the breaking point, and abrasions are primarily examined. These criteria are clearly superior in new rubber.



## Agri-Sand Saver RUBBER GRID MAT Q AND A:

### 1. How much sand can I expect to save?

Reductions of up to 50% have been reported compared to traditional deep bedded stalls.

### 2. What are the benefits of the Agri-SandSaver?

The Agri-Sand Saver mats minimize bedding usage, and keeps the bed level. When the mats are in place, cows are less likely to dig. Handling costs are also reduced because less sand is wasted.

### 3. How does it work?

Milk and urine drain through the top layer and wick away leaving a higher dry matter bedding.

### 4. What is the payback ?

Payback varies but is typically 3 years based on purchase cost of bedding.

### 5. How does it help cow comfort?

Extending lying time can increase cow comfort and milk yield.



## VITALITY SYSTEM Q AND A:

### 1. My calves are taking a long time to drink, is this normal?

Yes, the slower they drink the better! Ideally your calves need to be drinking 1 qt. in around 3-4 minutes. With a controlled milk delivery the calves will nurse the teat to produce saliva. Saliva has antimicrobial properties to boost immunity and also aids in correct curd formation for better digestion.

### 2. How do I clean my Milk Bar Bottles and feeders?

Milk Bar feeders and bottles are incredibly easy to clean. The teat does not need to be removed for cleaning. A daily rinse and a hot wash twice a week with Alkali Detergent is enough to keep your feeders clean.

### 3. How long will my teats last?

The golden rule with teat replacement is one teat per calf. By following this simple rule you will know that calves are nursing at the right speed until weaning. The Milk Bar Teat will last until weaning, whether it be 10 or 12 weeks.

### 4. How high should my teats be?

For best results make sure the calf teat is 2' / 61cm high from the ground. This helps to prevent milk entering the trachea.

### 5. If the teat controls the milk flow, will training be difficult?

Not at all, in fact training a calf to suckle with the Milk Bar Teat is very easy. This is because the calf uses the same action to drinking from a Milk Bar Teat as she does when drinking from a cow. Her natural instinct will take over to make training very simple.



## INTERLOCK RUBBER MAT Q AND A:

### 1. What are the advantages of rubber mats?

Our rubber mats are an ideal solution for cattle breeders and farmers. They imitate the natural substrate, which directly affects the comfort and safety of animals. In addition, our rubber mats have insulating properties.

### 2. How does the tread pattern help livestock comfort?

The nonslip structure of the mat reduces the risk of injury and prevents pressure sores, so the use of our product contributes to the overall improvement of the condition of the herd.

### 3. Why use an interlock mat?

Interlock mats allow for easy and quick installation. 3 different sizes give greater flexibility for differently sized spaces. And if needed, our rubber mats can also be cut to fit your space.

### 4. How do rubber mats help livestock and the farms that install them?

Moreover, thanks to the use of rubber mats for agriculture, it is much easier to maintain cleanliness in the building, which has an impact on the overall well-being of the herd and thus the quality of milk obtained. It directly affects the increase in productivity. Healthy animals contribute to a calm breeder and an efficient farm.





## BRUSHES Q AND A:

### 1. Where is the best location to install a brush?

The most common placement is on a crossover beam. This area usually offers the most available space, letting the brush move without any obstruction. Installing on a crossover beam gives cows access from both sides without blocking other animals from entering a stall.

### 2. How high should I install the ComfortBrush?

You should install the ComfortBrush mounting arm 88-96" / 2.2-2.4m from the ground to the bottom arm. For Calf Brushes, you should install the brush based on the size of your animals. As a rule of thumb, the bottom of the brush should hang right at the underbelly of the cow.

### 3. What type of power source will I need?

FutureCow's ComfortBrush is available in 110v/220v and 3-Phase 480v options. The Calf Brush is available in 110v/220v.

### 4. Do the rotating brushes run constantly?

No, a motion sensor is used to start rotating the brush when it detects that cows are nearby. After 60 seconds of inactivity the brush will automatically turn off.

### 5. How many cows can use each brush?

We suggest no more than 60 to 100 animals per brush. All of our cow brushes can accommodate multiple animals at the same time.

### 6. How do cows adapt to a new brush?

Cows are naturally curious, so it does not take long for them to start using a ComfortBrush. Within a week you should see your cows using the brush daily.

### 7. Will tail chalk be rubbed off with a ComfortBrush?

Unlike some other brushes on the market, FutureCow's rotating brushes are designed not to rub off tail chalk.

### 8. How long do ComfortBrushes last?

When 100 or less cows are given access to FutureCow's rotating brushes, we guarantee them for 2 years, and that includes wear on the brush. But a brush should last even longer than that. The 48" / 121.92cm brush can even be flipped vertically to extend its lifespan.

### 9. What maintenance is required?

Once a ComfortBrush is installed, it should require no maintenance. We do, however recommend you periodically inspect the shafts, roll pins, universal joint, screws for wear. Also, periodically inspect the gear box for any leakage of oil or grease.



## VENTILATION SYSTEM Q AND A

### 1. How do these systems work?

Positive pressure systems use a fan located at the end of the barn to deliver fresh outside air along a heavy-duty fabric tube. The tube carries fresh air the length of the barn and discharges it through holes located above each pen. Every tube is custom designed to each barn's unique pen layout.

### 2. What are these positive pressure tubes made of?

Two materials are available based on the application required. Most commonly, the tube is made of a durable, ripstop high-density polyethylene. If the tube will be exposed to direct sunlight, a vinyl material is available.

### 3. How long can the tube be?

Experience has shown an operating length of 200' / 61m for a single fan system is possible. Longer runs can be accomplished but will require specialized fan equipment and advanced design considerations. In most situations, a tube can ventilate a width of 20-25' / 6-7.6m.

### 4. Won't this added ventilation make it too cold in the winter?

Great care is taken in the design of each ventilation system to ensure that fresh air is delivered to the calf WITHOUT CREATING A DRAFT in cold weather. A properly designed ventilation system delivers a blanket of fresh air that gently settles over each calf. The use of variable speed fans and the internal membrane technology found in FLIP DUCT and FLAP DUCT offer unmatched air speed control.

### 5. I have fans in my barn already, isn't that enough?

Having fans in a barn does not mean the calf pens are adequately ventilated. Often the air inside the calf pen is poorly ventilated despite having numerous fans throughout the barn. If you are unsure about the ventilation status of your calf barn, call and schedule a calf barn ventilation evaluation with Dr. Leiterman.

### 6. Are these systems easy to install?

Yes! The positive pressure tube system comes complete from the manufacturer with with everything necessary for installation along with an installation diagram.



THE LIVESTOCK COMFORT SPECIALIST



**UNITED STATES**  
NEBRASKA  
NEW YORK

**CANADA**  
ONTARIO

**EUROPE**  
IRELAND



By partnering with leading manufacturers, Agri-Comfort delivers the most innovative products and solutions from around the world. We bring knowledge and experience to ensure

all livestock have the best products available. Our focus has always been on comfort and durability, with offerings that are farm-tested and livestock approved.

### **Agri-Comfort Headquarters**

**701 East Elm Street, Sidney, NE 69162 • Toll-free in North America: 1-888-231-3575**

**Phone: 308-254-1137 • Fax: 308-254-4527**

**info@agri-comfort.com • www.agri-comfort.com**

#### **NORTHEAST USA SALES OFFICE AND WAREHOUSE**

3731 Luker Road  
Cortland, NY 13045  
Tel: 1.607.591.0103  
T.F.: 1.888.231.3575  
info@agri-comfort.com

#### **CANADA SALES OFFICE AND WAREHOUSE**

7793 Young Street  
Grassie, ON  
Canada LOR 1M0  
Tel: 1.905.945.3116  
T.F.: 1.888.231.3575  
info@agri-comfort.com

#### **INTERNATIONAL SALES OFFICE AND WAREHOUSE**

Church Street  
Athenry, Galway  
Ireland. H65WK76  
Tel: +353 91 399903  
Email: intsales@agricomfort.com



A division of  
**AGRI-PLASTICS**  
Group of Companies